

12. Moving Targets

Description: Bright streak(s) across WFPC2 field of view at random orientation. Streaks are usually only a few pixels across although some up to ~50 pixels wide have been seen. May appear in one or more CCDs. A mosaicked image will show a continuous streak across full field of view when multiple CCDs are involved.

Cause: Bright spacecraft / space junk passing through the WFPC field of view during exposure.

Examples: Figures 12.1 and 12.2 show mosaicked images with typical moving targets.

Impact: Data lost over small region of field in single images. Reduce impact by combining multiple images of same field.

Correction: Mask out (discard) affected pixels when combining multiple frames of the same field. See Section 14.

Prevention: Occurrence cannot be prevented. Can reduce impact by taking multiple images of field.

Figure 12.1 Mosaicked image showing moving target across WF2, PC1, and WF4.

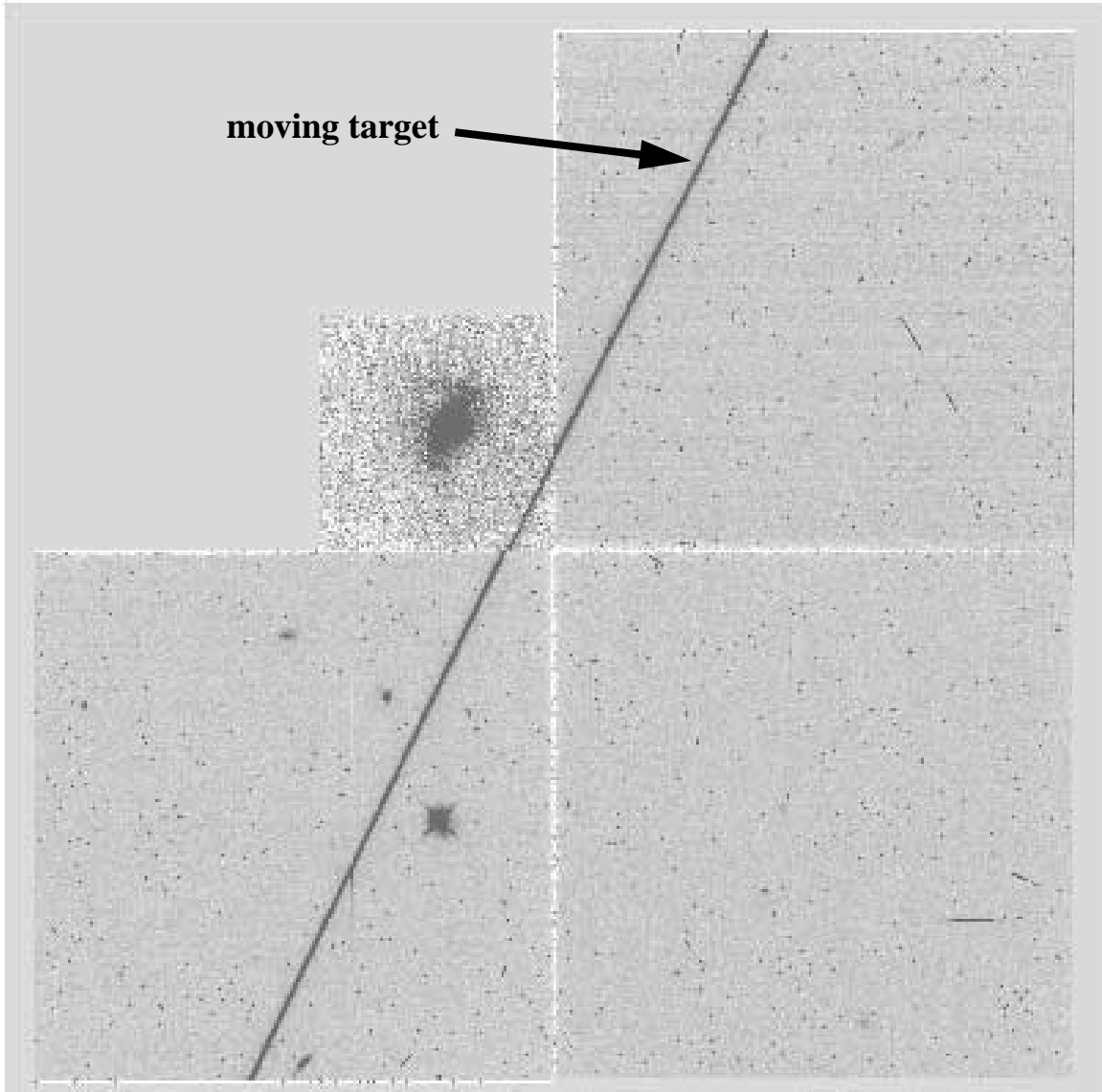


Figure 12.2. Another moving target across WF2, PC1, and WF4.

